

**TAMWORTH COMMUNITY SAFETY  
PARTNERSHIP PLAN  
2023-2026**



## **Introduction by Chair of the Community Safety Partnership**

By working together to reduce crime and ASB, our vision is to improve public perception, wellbeing and community safety in Tamworth.

All partners are very much aware of the stark links between the impact of criminal activity and a whole range of socio-economic factors. We are wholeheartedly committed to doing everything we can to tackle these issues to ensure that all people living in, working in or visiting Tamworth live good lives and meet their aspirations.

The Partnership will take a strategic approach to ensuring that our crime reduction and community safety work supports our priorities.

We will connect our approach with other areas of work to tackle the causes of crime and the factors which enable crime to flourish.

This includes:

- Prevention of crime wherever possible
- Early intervention and supporting those most vulnerable
- Targeting prolific offenders
- Targeting resources to hotspot areas
- Supporting victims
- Increasing public confidence and perception

**Andrew Barratt, Chief Executive, Tamworth Borough Council**

## **What is Tamworth Community Safety Partnership?**

Tamworth Community Safety Partnership is a collection of statutory agencies working together to reduce crime and antisocial behaviour across the town.

The partnership goes further than this and includes a wide range of committed organisations, local charities, businesses, residents and community groups who work independently and together to make Tamworth a safer and stronger place.

This partnership is overseen by the Community Safety Partnership Board which is made up of the statutory partners:

- Tamworth Borough Council
- Tamworth Local Policing Team
- Staffordshire Fire & Rescue,
- Staffordshire County Council
- Staffordshire and Stoke on Trent Integrated Care Board
- Midland's Partnership Foundation Trust
- National Probation Service.

The Partnership is also supported through the collaborative work with commissioned and voluntary services including:

- Support Staffordshire
- Staffordshire Council for Voluntary Youth Services (SCVYS)
- New Era Domestic Abuse service
- Harmony ASB
- Uniting Staffordshire Against Crimes of Hate (USAH)
- Community Together CIC
- Heart of Tamworth
- Better Way Recovery
- Fun Club
- Beat the Cold
- Citizens Advice Mid Mercia
- Tamworth Street Angels
- Pathway

The wider role that the community and voluntary sector groups in Tamworth play in the delivery community safety outcomes is extremely important.

The main role of the partnership is to actively lead on the development and delivery of strategic approaches to a range of priority crime and community safety issues. The priorities for 2023-2026 are set out on the next page of this plan.

## **Delivery**

The Community Safety Partnership Board will appoint theme leads from the partnership who will oversee delivery of work within that work area. Real-time data will be used to re-assess the proposed actions and report on the measures of success and ensure we can set achievable targets that make the required impact.

Theme leads will lead the collaboration and delivery of work in these areas and will report back to the Board on outcomes and performance.

An annual review and refresh will take place by the Tamworth Borough Council Infrastructure Safety and Growth Scrutiny Committee who will independently scrutinise the work of the partnership.

**The Partnership continues to be funded through the Staffordshire Commissioner's Office (Police, Fire and Rescue, Crime) Locality Deal Fund. Commitment for 2023/24 and 2024/25 is £61, 394 per year.**

## OUR PRIORITIES 2023-2026

The 2022 Tamworth Community Safety Strategic Assessment has identified the following areas as priority work areas for 2023-2026

### **Anti-Social Behaviour (ASB)**

**Community Cohesion<sup>1</sup>**  
*(including preventing radicalisation, exploitation and hate crime)*

**Domestic Abuse**  
*(Including stalking and harassment)*

**Drug Related Crime and Harm**  
*(including the prevention of exploitation of young people – County Lines)*

**Public Place and Serious Violence**  
*(including Violence, Abuse and Intimidation Of Women and Girls – VAIWG)*

**Vehicle Crime**

**Vulnerable Persons**  
*(the prevention of harm to persons at risk of criminal exploitation or becoming victims of crime )*

Our priorities are linked to:

[Police and Crime Plan 2021-2024](#)

[Fire and Rescue Plan 2021-2024](#)

[Staffordshire Domestic Abuse Strategy 2021-2024](#)

[Staffordshire and Stoke on Trent Serious Violence Strategy](#)

[Staffordshire Safeguarding Board](#)

[Staffordshire Police Violence Abuse and Intimidation Against Women and Girls Strategy](#)

---

<sup>1</sup> There is common vision and a sense of belonging for all communities; The diversity of people's different backgrounds and circumstances are appreciated and positively valued; Those from different backgrounds have similar life opportunities; and, Strong and positive relationships are being developed between people from different backgrounds in the workplace, in schools and within neighbourhoods

## OUR KEY TARGETS

- More positive outcomes for victims
- Increased positive promotion of actions and communications across all areas
- Reduction of repeat callers across all agencies
- Improvement of identification, monitoring and resolution of problems
- Increased use of proportionate intervention powers
- Improved perception and feelings of safety

## ACHIEVEMENTS 2020-23

### ASB Community Safety Partnership

#### Working Group established

- 72 First stage Letters Issued
- 15 Community Protection Notice
- 39 Community Protection Warnings
- 6 Cannabis Letters
- 11 Good Neighbour Agreement contracts
- 15 Multi-Agency Meetings (with parents)

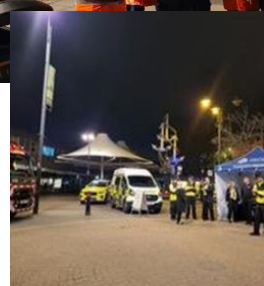
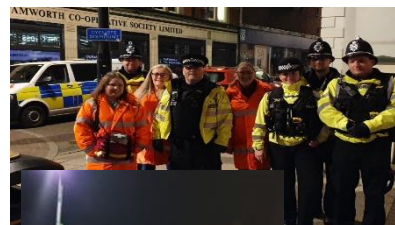
#### Delivery of positive diversionary activity



*PCC Ben Adams trying out the equipment for the SPACE Scheme*

#### Tamworth Nightlife

#### Safer Nights Operation



## Mental Health Support

### Samaritans Outreach Work

You are not alone, even on the darkest day



**Changes**  
(Mental Health Support)  
awarded the Queen's Voluntary  
Service Award



### Community Together Telephone Befriending Lines



## WARM spaces TAMWORTH



WHERE	MON	TUES	WEDS	THUR	FRI	SAT
<b>Change Hub</b> Café 9.30am - 4.00pm Everyday Tamworth, B77 7LS	Hot meals at the Hub 10.30am - 2.30pm	Hot meals at the Hub 10.30am - 2.30pm	Hot meals at the Hub 10.30am - 2.30pm	Hot meals at the Hub 10.30am - 2.30pm	Hot meals at the Hub 10.30am - 2.30pm	Hot meals at the Hub 10.30am - 2.30pm
<b>Change Hub</b> Early Community Centre Tamworth, B77 7LS						
<b>Elim Church</b> 18 Park End St Borecote, Tamworth, B77 7JY	Diamonds Choir 10.00am - 12.00pm *Free for all to attend & no commitment to any one	Total Group 10.00am - 12.00pm *Free for all to attend & no commitment to any one				
	Hope Project 12.30pm - 2.00pm every 4th Friday			Hope Project 11.00am - 1.00pm every 1st Friday		
					Limpsic Club 6.15pm - 7.45pm A&J 4-11	
<b>Manna House</b> 132 St Austins St, Borecote Tamworth, B77 7JY	LIGHTHOUSE STARTING 26 JANUARY 9.30am - 1.00pm *Free for all to attend & no commitment to any one	Community Coffee Shop 10.00am - 1.00pm		Community Coffee Shop 10.00am - 1.00pm		Crab Mowing 10.00am - 1.00pm *Free for all to attend & no commitment to any one
<b>United Heart</b> Community Centre 125 St Austins St, Borecote Tamworth, B77 7JY						
<b>St Martin's Church</b> & Community Centre Borecote, Borecote Tamworth, B77 7JY						
				Friday Coffee Shop 10.00am - 1.00pm		
<b>Tamworth Assembly</b> Rooms Carnegie St, Tamworth, B77 7JY	Monday TV / Cinema Film TIME TBC	Tamworth Assembly Rooms 207th & 21st Floor Crafting for children & families *Free for all to attend & no commitment to any one		Women's Place of Wellbeing TBC		
				Chaplain Counselling Centre Borecote, Borecote Tamworth, B77 7JY		<b>SHINE MVS</b> until end of March *Free for all to attend & no commitment to any one

Provided by MPFT in partnership  
with Tamworth Elim Church,  
Manna House and Tamworth  
Borough Council



Warm spaces will be running from December 2022 until 31st March 2023 providing a warm, friendly space with FREE hot and cold drinks and light bites available.

## Community Safety Partnership Campaigns

### Homes for Ukraine Scheme

209 Local people offered a room in their home.



### Integration of asylum seekers



### We're dementia friendly in Tamworth

The Alzheimer's Society has once again congratulated Tamworth for maintaining its Dementia Friendly Community status for the fourth year running



### Water Safety Campaign



### White Ribbon Campaign &

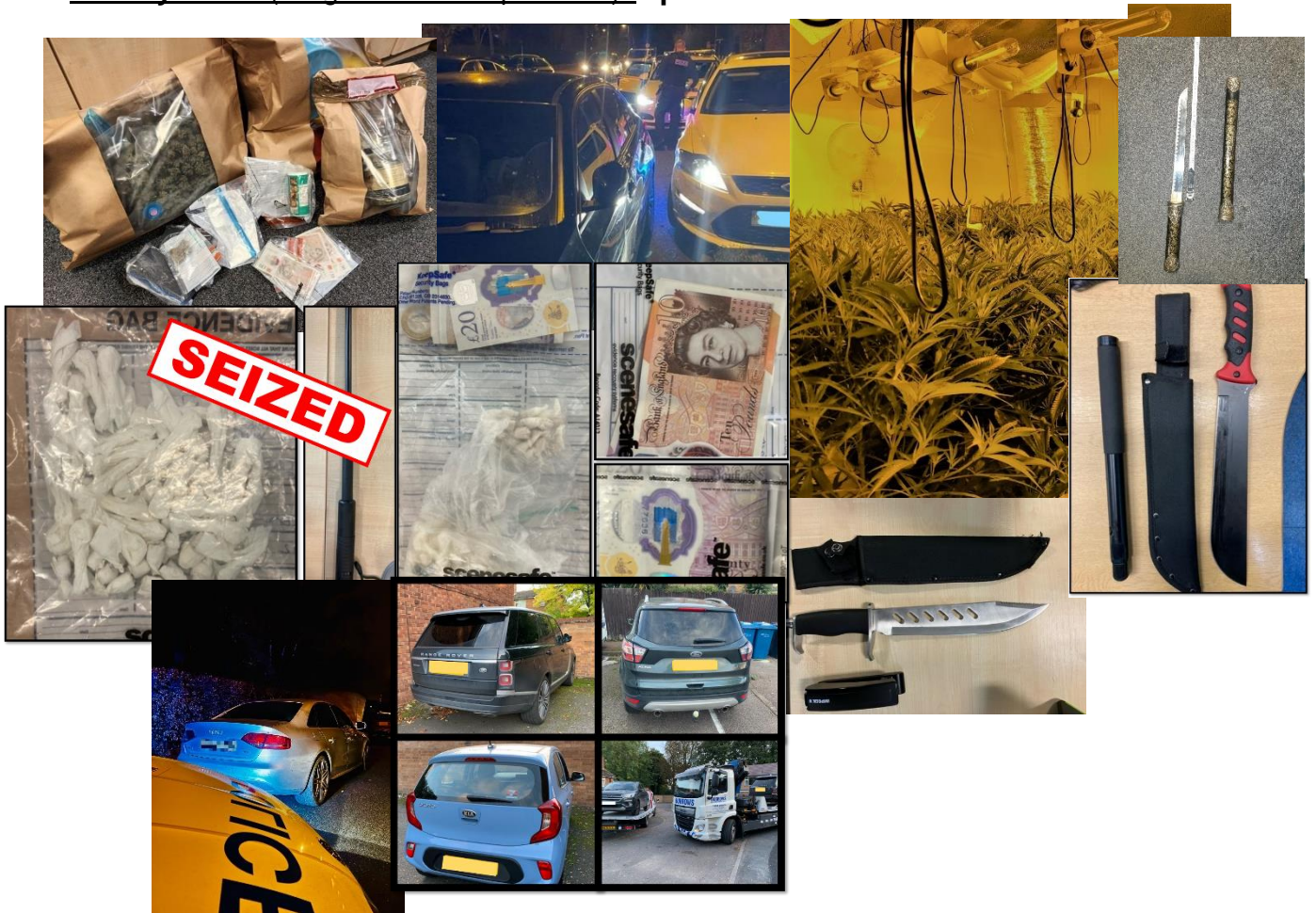
### United Nations Orange The World



## County Lines / Criminal Exploitation / Drug Education



## County Lines (Drugs/Criminal Exploitation)/ Operation Bormus







**Cleaner Tamworth**  
**Litter pickers**



**Winter Relief project**  
**(Homelessness at Heart of Tamworth)**



## HOW TO REPORT

Tamworth Borough Council 01827 709709 (Homelessness Option 9)

999 Emergency

101

Report on line [Staffordshire Police](http://www.staffordshire.police.uk) www.staffordshire.police.uk

[Hate Crime](#) – Uniting Staffordshire Against Crimes of Hate (USAH) – 0330 0881 339

[Harmony](#) ASB Support Service – 0808 1689 111

[Domestic Abuse](#) – New Era 0300 303 3778

[Community Together CIC](#) Befriending Line – 0808 175 4041

Mental Health Crisis Line 0808 196 3002

Tamworth Advice Centre 0808 278 7972

Home Energy Advice Tamworth (HEAT) 0800 043 2815

[Staffordshire Connects](#) (a directory of all the Help and support in your community)

[Safeguarding](#): report it - Don't wait until you are certain. Concerns of immediate harm must be reported to the police on 999 or 101.

Once you have reported to the police contact Staffordshire County Council's First Response Service. Tel: 0300 111 8007 opt 1.

Child; If you have welfare concerns about a child or young person but believe them not to be at immediate harm, contact Staffordshire County Council's First Response Service. Tel: 0300 111 8007 opt 1 or complete the Report a concern online form - Staffordshire County Council. Staffordshire Police. Tel: 101. Ask for M.A.S.H. (Multi Agency Safeguarding Hub)

Adult; If you have concerns for an adult. Tel 0345 604 2719. Email: [VAStaffordshire@staffordshire.gov.uk](mailto:VAStaffordshire@staffordshire.gov.uk)

A trained member of staff will be available to help you between 8:30am - 5:00pm, Monday-Thursday (excluding Bank Holidays) and 8:30am - 4:30pm Fridays.

To report a concern outside of these hours, please contact the Emergency Duty Service. Tel: 0845 6042886. Text: 0845 6042886